

extra

An Introduction to Burn Care



Michel H. E. Hermans, MD • Hermans Consulting, LLC • Doral, Florida

The author, faculty, staff, and planners, including spouses/partners (if any), in any position to control the content of this continuing education activity have disclosed that they have no financial relationships with, or financial interests in, any commercial companies pertaining to this educational activity.

To earn CNE/CME credit, you must read the article and complete the quiz online, answering at least 13 of the 18 questions correctly.

This continuing education activity will expire for physicians on December 31, 2020, and for nurses on December 4, 2020.

All tests are now online only; take the test at <http://cme.lww.com> for physicians and www.nursingcenter.com for nurses. Complete CNE/CME information is on the last page of this article.

GENERAL PURPOSE:

The purpose of this learning activity is to provide an overview about burns and current burn care.

TARGET AUDIENCE:

This continuing education activity is intended for physicians, physician assistants, nurse practitioners, and nurses with an interest in skin and wound care.

LEARNING OBJECTIVES/OUTCOMES:

After completing this continuing education activity, you should be better able to:

1. List factors affecting the types, size, and depth of burns.
2. Propose first aid and treatment for various burns.

ABSTRACT

Burns are a very specific type of injury and, particularly in the case of large and/or deep lesions, require highly specialized care. This article gives a basic overview of burns and burn care and is not intended to discuss overall burn care in detail.

KEYWORDS: burns, burn care, burn center, lesions, referral, total body surface area, wound care

ADV SKIN WOUND CARE 2019;32:9-18.

INTRODUCTION

Burns are a very specific type of injury and, particularly in the case of large and/or deep lesions, require highly specialized care. In the US, the number of patients seeking medical care for a burn injury seems to be stable at approximately 500,000 per year.¹ Around 40,000 of these patients are hospitalized because of burn injuries, and 60% of those are treated in specialized burn centers.¹

While small burns are the majority and usually not life threatening, larger burns, even partial-thickness ones, still pose a major

threat when not treated properly. Small burns still may cause major morbidity, however, because the injury may be very painful and can lead to disfiguring outcomes such as hypertrophic scars, keloids, and contractures.²

This article gives a basic overview of burns and burn care and is not intended to discuss overall burn care in detail.

TYPES OF BURNS

Burns can be categorized as follows:³

- Scald injuries typically result in partial-thickness lesions when cooled quickly. The injury is caused by contact with a hot fluid such as hot tea or coffee.
- Flame injuries are caused by direct exposure to flames. House and car fires are common etiologies, and the burns usually are full-thickness.
- A flash burn may be caused by very short exposure to a burning gas or vapor. The lesion is often partial-thickness (unless, for instance clothing catches fire).
- Contact burns are caused by contact with a hot surface. In many cases, these injuries are not deep, although this depends on the temperature of the surface touched and the length of exposure. Major injuries may be caused by the combination of pressure and prolonged exposure to the heat source, as is the case in patients who, after an epileptic insult, remain in contact with a hot surface for a prolonged period.^{4,5} On a hot day, asphalt can cause a second-degree burn in less than a minute.⁶ Contact with hot coals, molten metal, and other high-temperature substances often leads to deep burns.
- Electrical burns are caused by contact with an electrical current or electricity strike. Electricity is converted to heat, leading to extensive and deep tissue necrosis that may initially be hidden to the naked eye. The amount of heat is proportional to the electrical resistance of the tissues and the amperage.⁷ Electric burns often rapidly lead to systemic complications such as acidosis or myoglobinuria and renal failure, and compartment syndrome.⁸
- A radiation injury is caused by exposure to heat radiation (in contrast to ionizing radiation). These injuries are usually first degree; a typical example of this type of injury is a sunburn.

Not all lesions that are commonly treated in burn centers are burns in a true sense. Patients with frostbite; chemical injuries; and diseases such as toxic epidermal necrolysis, epidermolysis bullosa, and necrotizing fasciitis nowadays are often treated in burn units because their systemic complications and required surgical interventions can be similar to those of thermal injuries.^{9–11}

Most chemical agents damage the skin by producing a chemical reaction rather than a hyperthermic injury,¹² and thus, chemical lesions are not burns in the literal sense. This type of injury may require special treatment copious irrigation with water is often a proper way to initiate treatment.¹³ Specific treatment depends on

the type of chemical causing the injury; hydrogen fluoride, for example, enters the human body via where it contacts it and can penetrate skin, nails, mucosa, alimentary and respiratory tracts, and ocular surfaces,¹⁴ requiring treatment that focuses on the subcutaneous tissues and the (systemic) effects of absorption. Treatment may include compounds such as calcium gluconate gel or intra-arterial injections.¹⁵

Skin injuries caused by radiotherapy often also are called radiation burns.¹⁶ Because of their pathophysiology, these lesions should be considered ulcers (chronic wounds)¹⁷ rather than burns. Radiation injuries lead to changes in cytokine and metalloproteinase modulation and expression that are, indeed, much more similar to those seen in ulcerations.^{16,18–22}

BURN SIZE

Morbidity and mortality of burn injuries are directly related to the size of the burn, whether an inhalation injury and/or other concomitant or preexisting diseases exist, and the general condition and age of the patient.²³ Superficial but large burns, particularly in older adults and young children, are sometimes associated with a high level of morbidity and mortality.

Most wound measurements express the size of a lesion in cm² (or in²). The size of a burn, however, is expressed as a percentage of the total body surface area (TBSA). The rule of nines is used to calculate a rough estimate of the burn size:²⁴ the body is divided in areas of nine or multiples of 9%. Each leg and side of the trunk count for 18%, and the head and arms each count for 9%. The remaining 1% is reserved for the genitalia and the perineum.

In pediatric patients, these percentages are different: for example, in a neonate, the head counts for 18%. To determine the exact size of a burn, burn centers use much more specific charts based on the age of the patient;²⁴ corrections on these charts are necessary for (morbidly) obese patients.²⁵ An easy guideline is that the patient's palm represents 0.5% TBSA.²⁶ Still, without specific tools, accurate measurement of burn size is notoriously difficult for providers untrained in burn care.²⁷

Sophisticated means for measuring TBSA are now available, using techniques such as three-dimensional computer modeling.^{28–30} While generally speaking the accuracy of these methods is excellent, they are not yet fully established and/or widely used.

CONCOMITANT INJURIES OR MORBIDITIES

Major burns (ie, those exceeding 20%–25% TBSA in adults) are associated with a number of complications. A rapidly occurring change in capillary permeability causes massive fluid transfer from the circulation into the interstitium, which, when untreated, quickly leads to hypovolemic shock. To avoid this, patients with large burns initially receive large I.V. volumes of fluid to sustain sufficient circulation. The type and amount of fluid are calculated

using specific formulas.^{31,32} When capillary permeability has been restored, this fluid needs to be removed using forced diuresis.

The skin of an average-size male weighs in at around 20 pounds. Thus, a 50% TBSA full-thickness burn is associated with approximately 10 pounds of necrotic tissue. The amount of necrotic tissue and the reaction to heat exposure are directly responsible for systemic problems in large burns; this effect is known as burn disease.³³

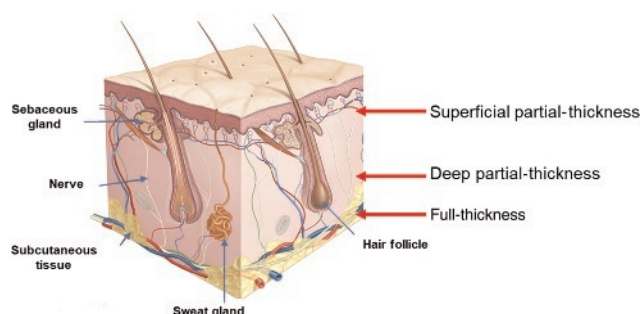
Infection and sepsis remain major risks^{34,35} and cannot always be avoided.^{36–38} A typical complication is systemic inflammatory response syndrome.³⁹ This serious condition is related to organ dysfunction and failure and systemic inflammation.^{35,40} It is a subset of the cytokine storm, which is characterized by dysregulation of various cytokines.⁴¹ It is also closely related to sepsis, in which patients satisfy criteria for systemic inflammatory response syndrome and have a suspected or proven infection.⁴¹

A specific serious complication that may accompany flame burns in particular is inhalation injury. Essentially, the inhalation of toxic and/or hot gases and fumes causes damage to the tracheal and pulmonary system.⁴² This condition is associated with a high level of morbidity and mortality and often requires artificial ventilation.^{43–45}

DEPTH OF BURNS

The depth classification of a burn is related to the anatomy of the skin (Figure 1). The basal membrane separates the epidermis from the dermis. The dermis contains epidermal structures such as sebaceous and sweat glands. Complete destruction of the epidermis and dermis renders re-epithelialization possible only from the wound edges. Re-epithelialization from the deeper, epidermal structures is possible, in principle, when these structures are still intact. Therefore, partial-thickness burns have a higher potential to heal spontaneously and without surgical intervention and do so more quickly than full-thickness burns.

Figure 1.
ANATOMY OF THE SKIN



Note the epidermal structures (hair follicles, sebaceous glands, sweat glands) deep in the dermis.

The location of a burn also may influence the depth of a burn because the thickness of the skin depends on the anatomical location on the body. Thicker skin can better resist a certain amount of thermal exposure: thus, a burn of the lower back, where the skin is thick, will be more superficial than the thin skin on the eyelids when exposed to the same amount of heat.

The depth of a burn is also related to the time of exposure and the temperature of the insulting mechanism. Therefore, as mentioned, contact burns are mostly superficial because the exposure time is very short. Scalding, on the other hand, rapidly leads to deep burns. Exposure to water with a temperature of 55° C for 25 seconds results in deep dermal or full-thickness burns, whereas a 2-second exposure to water at 65° C causes a similar injury.⁴⁶ Further, because of the much higher thermal capacity of water, a scald usually is deeper than a grease burn, despite the (often much) higher temperature of the grease.

Depth per se is not directly related to the level of morbidity or mortality (in contrast to size of the burn injury), but it determines whether surgical intervention is necessary.

A burn wound is an active wound with a particular physiology;⁴⁷ burns initially diagnosed as superficial partial-thickness burns have been known to deepen after a few days, known as conversion or secondary deepening.^{48–50} On a cellular level, inadequate tissue perfusion, free radical damage, and systemic alterations in the cytokine milieu of patients^{47–51} are part of the underlying etiology. These phenomena are the result of a number of events in and surrounding the wound such as impaired wound perfusion, infection, tissue desiccation, edema, a circumferential eschar, metabolic derangements, and older age.⁵² Whatever the exact mechanisms, choosing the appropriate dressing plays an important role in the prevention of conversion in partial-thickness burns, although some burns may still convert.⁵³

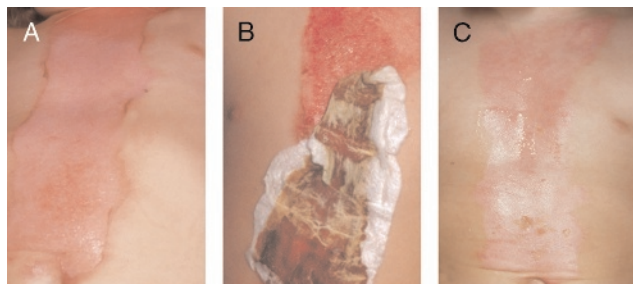
First-Degree Burns

Most sunburns are typical examples of a first-degree burn. The epidermis is not breached, but the lesion is painful and looks red because of the inflammatory response. Desquamation may occur after a couple of days. Small first-degree burns do not require any specific treatment; although many dressings have a formal indication for first-degree burns, the patient may benefit from the application of a soothing cream or ointment and some form of pain treatment instead.

Superficial Partial-Thickness Burns

In superficial second-degree burns, the epidermis is destroyed, and the lesion exposes superficial parts of the dermis. Blisters may or may not occur. The skin is hypersensitive to the touch, and the lesion is moist and pink in color underneath the blisters (Figure 2A). Capillary refill is almost immediate. Given appropriate treatment, this type of burn will heal with minimal scarring within 10 to 14 days.

Figure 2.
SUPERFICIAL PARTIAL-THICKNESS BURN IN A TODDLER



A, Typical superficial partial-thickness scald in a toddler, postburn day 0. B, Treatment with a modern dressing. On the cranial side of the wound, the dressing “dislodged” from the wound, showing re-epithelialization underneath, postburn day 7. C, Complete re-epithelialization on postburn day 12. This wound is unlikely to develop hypertrophic scarring.

Deep Partial-Thickness Burns

In deep second-degree burns, the deep dermis is exposed because both the epidermis and the superficial dermis are destroyed. Visually, the lesion may mimic a superficial partial-thickness injury or a full-thickness injury. Capillary refill is slow or may not occur at all (Figure 3A). The amount of pain varies.

The exact depth of this type of burn may be very difficult to determine visually. Laser Doppler flowmetry (LDF) may assist in establishing a more accurate diagnosis. Because most deep-seated epidermal structures are destroyed, healing from deep structures is limited: healing may take significantly longer, and (late) surgical intervention may be warranted.

Full-Thickness Burns

In these burns, the wound surface is usually dry to the touch and leather-like. The color of the burn depends on the acting agent (Figure 4): a full-thickness scald is usually white, whereas a flame burn is often black because of the soot. The lesions are generally not painful, because the whole dermis and epidermis, including the nerve endings, have been destroyed. In most cases, excision and grafting are warranted.

Fourth-Degree Burns

In these burns, the entire skin is destroyed, and substantial thermal damage is evident in subcutaneous and deeper tissues. Extensive carbonization may be present in flame burns. This type of burn is also seen in patients exposed to a combination of prolonged pressure and a hot surface. Major reconstruction efforts with or without amputation are often necessary.

Depth Diagnosis

For a provider to make an accurate depth diagnosis, patient history is important, as is the mechanism of injury and the physical aspects of the burn. If, for example, the patient history indicates immediate cooling after a flash burn, chances are that the burn is not very deep, whereas exposure to flames will virtually always result in a full-thickness burn. If the patient history is not congruent with the injury, providers should suspect abuse, particularly when the patient is a young child; they should notify authorities and ensure the safety of the patient.

Even experienced burn physicians and nurses can misjudge the initial depth of a burn.⁵⁴ The level of skin blanching can help establish proper depth diagnosis because slow or absent refill indicates a deep lesion. Another method to assist in this determination is the pinprick test, in which the injured area is very gently probed with a sharp needle tip, and the patient self-assesses the intensity of his/her pain. Serious pain indicates a superficial burn. Minimal or no pain indicates a deep dermal or full-thickness burn.

Ultrasound also can be used to assess depth, but results may not be significantly different from clinical judgment,⁵⁵ although newer devices with higher levels of discrimination are currently being tested. Dyes such as fluorescein have been evaluated and can help make a distinction between nonnecrotic and necrotic tissue⁵⁶ but are not commonly used.

In experimental and clinical research, LDF was proven to provide a reliable depth diagnosis.^{57,58} In general, LDF devices have become smaller, faster, and easier to use, making the technique more practical⁵⁹ and allowing for quick, accurate,

Figure 3.
MIXED PARTIAL-THICKNESS BURN IN A TODDLER



A, Typical mixed partial-thickness scald, postburn day 1. B, A fresh layer of SSD cream is in place, postburn day 5. C, Secondary deepening on a wide scale, postburn day 12. This burn now needs to be excised and grafted.

Figure 4.

FULL-THICKNESS BURN



A small burn caused by contact with a hot motorcycle exhaust pipe, postburn day 0.

and rapid diagnosis over large surfaces.^{58–61} Even more sophisticated techniques, such as the use of laser speckle contrast, are currently being investigated for the analysis of burn depth.⁶²

FIRST AID AND GUIDELINES FOR REFERRAL

The simple measures that comprise initial care are essentially identical whether or not a patient is referred to a burn center.³

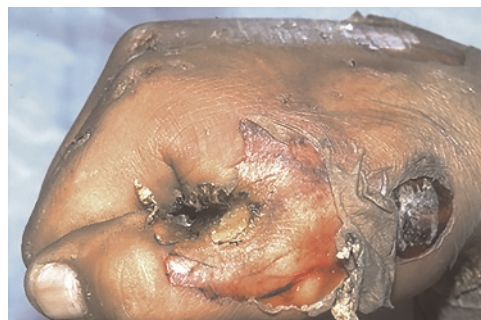
- For thermal and chemical injuries, immediate cooling is important because tissue temperatures greater than 45° C will exacerbate local injury.⁶³ Dissipating heat is the first step. Running tap water for a minimum of 10 minutes over the injury site helps reduce the initial pain,^{64–66} decreases wound edema,⁶⁷ and decreases the risk of secondary deepening.^{50,67} Water also helps to dilute any chemical agent; however, depending on the agent, additional measures may be necessary. Too much cooling carries the risk of hypothermia; patients, particularly children, should not be immersed in ice water.
- Rings may act as a tourniquet and have to be removed.
- Wounds may be gently cleaned using a soap with neutral pH. Some providers prefer chlorhexidine gluconate soap because of its antimicrobial effect against regular skin flora.⁶⁸
- Tar and asphalt burns should be cooled first. If the causative agents stick to the skin, peeling them away may do additional mechanical harm to the skin; the use of a solvent is preferred.⁶⁹
- Most chemical lesions may benefit from rinsing with water to dilute the agent. As previously stated, for many chemical agents, first aid is specific,^{13,70–75} so providers must identify the chemical that caused the injury.
- Prior to transportation, clothing may be carefully removed; it may be stuck to the wound. Providers should use a nonadherent dressing to cover the burned areas. Silver sulfadiazine (SSD) or other creams should not be used if the patient is referred, because the cream will need to be removed upon arrival in the burn center to assess the wound aspect and size, and this can be painful. The creams, particularly SSD, may also change the visual aspect of

the burn by creating a so-called “pseudo-eschar.”⁷⁶ Further, many over-the-counter “burn creams” are contaminated within a relatively short time after opening their container.

- In larger burns, I.V. fluids are indicated prior to patient transport to a burn center if transportation is expected to take more than 60 minutes: this is necessary to provide circulatory volume support. Several resuscitation guidelines and regimens are used. Among them, the administration of lactated Ringer’s solution, infused at 2 to 4 mL/kg per percent TBSA per 24 hours,⁷⁷ is one of the standards, but consult with the burn center in case a different regimen is preferred. If possible, I.V. access should not penetrate through burned skin and should be achieved using larger veins (central lines are preferable in patients with extensive burns).
- Opioids may be used as pain medication but may only be given intravenously; avoid other methods of administration because the pattern of uptake is unpredictable.
- If providers suspect an inhalation injury, 100% humidified oxygen should be administered during transportation. However, providers should first consult with the burn center to which the patient will be transported about possible intubation prior to putting the patient in the ambulance or helicopter. Inhalation injury should be suspected in patients with a cough, facial burns, or soot in the mouth or nostrils and/or when the patient is hoarse or wheezing.
- Headache, nausea, confusion, and vomiting are symptoms of carbon monoxide poisoning.⁷⁸ Admission for observation with humidified 100% oxygen, attentive pulmonary toilet, bronchodilators as needed, and prophylactic endotracheal intubation as indicated are the mainstays of treatment. Consult with the burn center to which the patient is referred.⁷⁹
- Escharotomies may be needed in patients with circumferential deep burns that may restrict respiratory excursion of the chest, circulation into the limbs, and/or postburn intra-abdominal hypertension.^{80–82} Consult guidelines from a burn center before performing an escharotomy.

Figure 5.

ELECTRICAL BURN



The extent of the injury underneath the skin is difficult to judge and needs to be explored.

The American Burn Association has several helpful criteria for referral, including any burns that involve sensitive areas such as the face or major joints.⁸³ These can be viewed at <http://ameriburn.org/wp-content/uploads/2017/05/burncenterreferralcriteria.pdf>.

Some providers prefer patients with acute respiratory distress syndrome to be transported in a prone position, whereas others prefer a sitting position during transportation;⁸⁴ still others prefer transportation in a semisitting position, particularly when patients are intubated.⁸⁵ Before transporting a patient to a burn center, the center should be contacted to discuss general and specific treatment, transport methods, and necessary interventions.

TREATMENT

Mortality in burn care has dropped significantly during recent decades. Nowadays, survival of patients with full-thickness burns of more than 95% TBSA is not uncommon.^{86,87} This may be attributed to better understanding of the physiology of burn disease and systemic responses, better prevention and management of complications, and more aggressive surgical approaches.

Smaller, partial-thickness burns that are fresh can easily be treated outside of a burn clinic with proper dressings. The dressing chosen should have a number of properties, including (but not limited to) keeping the wound moist, providing protection from infection, and reducing pain.^{88,89} Ideally, dressing changes should be limited because these interventions may be painful and may damage the healing wound.

In the past, global surveys have shown that SSD was the most commonly and frequently used antimicrobial agent for the management of burns, including small partial-thickness burns;^{90,91} this is probably still the case. There are a number of reasons, however, why this may not be justified for fresh, small, partial-thickness burns, including

- pseudoeschar, which makes judging burn depth difficult,⁷⁶
- the need for frequent changes,⁹²
- the potential for developing leukopenia,⁹³ and
- frequently observed delayed wound healing.⁹⁴

Gauze dressings are also commonly used and associated with delayed healing, increased infection rates for burns and donor sites, and an increase in pain when compared with modern biologic and occlusive dressings.^{90,94-102} Many proven dressings are available. If burns are fresh and small, the use of medicated creams is usually not necessary. Most importantly, if a burn is not healed within 10 to 14 postburn days, the initial depth diagnosis may have been incorrect, or conversion may have occurred (Figures 3A-C). The patient should be referred to a burn specialist because prolonged healing may lead to the formation of serious scars. This article does not recommend specific dressings; however, clinicians are encouraged to find information on properly tested materials with good outcomes from the published medical literature.

Full-thickness burns virtually always require excision and grafting, which should be performed by a specialist. Early excision is preferred¹⁰³⁻¹⁰⁵ because it reduces a number of complications associated with necrosis. Several techniques can be used to close the resulting open wound, including straightforward autografting, with or without meshing and with or with an overlay of allograft in widely meshed autografts.¹⁰⁶⁻¹⁰⁹ Other closure techniques can be used but are beyond the scope of this article. If excision and grafting are not possible because of serious comorbidities or additional extensive, nonthermal trauma, this in itself may be a reason for referral.

LONG-TERM RESULTS

The remodeling phase of wound healing involves reorganization of the extracellular matrix and is initiated after re-epithelialization is complete. The process may go awry, however, as the result of many biochemical processes that are involved in “improper” wound healing, among them a deregulation of a number of inflammatory mediators.^{110,111} These mediators play a major role in the development of scarring complications¹¹⁰ via a state of continuous and histologically localized inflammation,¹¹² which macroscopically results in hypertrophic scarring and the formation of contractures and/or keloids.

Hypertrophic Scars

Hypertrophic scars are red, inflamed, raised scars. They can be seriously debilitating and negatively impact patient quality of life because they may limit movement, can be painful, and are virtually always pruritic.¹¹³ If scarring is visible or extensive, the psychological burden of being considered “ugly” and “scary” by society is important to note.¹¹⁴

Hypertrophic scarring is virtually certain to occur in burns that have taken a long time to heal spontaneously.¹¹⁵ Scarring is also genetically determined: dark-skinned patients have a significantly higher risk of serious scarring.^{2,116} Scarring also depends on other factors, such as the location of the wound. A sternotomy incision, for example, frequently results in a hypertrophic scar.¹¹⁷

During initial healing, not much can be done to prevent hypertrophic scarring. However, using dressings and techniques that are proven to reduce time to healing may indirectly reduce the incidence of these scars.¹¹⁵ In patients who have a history of scarring, providers should take measures that lower the chance of hypertrophic scars, such as the use of (customized) pressure garments¹¹⁸⁻¹²¹ with or without silicon sheeting as a contact layer on the wound.¹²²⁻¹²⁴

If a scar has developed, consider corticosteroid injections.^{125,126} Other therapies are being developed, among them different types of lasers^{127,128} and promising pharmacologic agents.¹²⁹ In a recent report, the use of 2,940-nm wavelength Er:YAG as a treatment

for hypertrophic scarring was shown to lead to a high patient satisfaction with the outcome.¹³⁰

However, treatment of hypertrophic scars is often not satisfactory, and visible scars may remain, although they will become flatter and less inflamed over time. Surgical scar revision may be necessary, particularly when scar formation leads to contractures.^{131–133}

Keloids

Keloid formation is different from hypertrophic scarring, physiologically as well as macroscopically: a typical keloid extends beyond the borders of the original wound and has a cauliflower-type appearance.^{134–136} Prevention and treatment of keloids are even more difficult than those of hypertrophic scarring^{137–141} and are beyond the scope of this article.

Other Results

Contractures typically occur over joints, in the neck, and on the female breast and may lead to severe morbidity, requiring surgical reconstruction.^{142–144} Preventive measures include splinting and physiotherapy, but success is not guaranteed; often, secondary reconstructive surgery may be needed.

A Marjolin ulcer may develop in a burn scar, particularly when part of the original lesion is not healing. These ulcers, commonly basal cell carcinomas, should be treated as a regular skin malignancy but are not always recognized as such.^{145–148}

Other, non-skin-related postburn complications are not uncommon, such as heterotopic ossifications in periarticular tissue,¹⁴⁹ but are beyond the scope of this article.

SKIN DONOR SITES

Skin donor sites can be full- or partial-thickness and located virtually anywhere in the body.^{150–152} Full-thickness donor sites are not common in primary burn management: the donor site itself must be covered with epithelium unless it is very small and can be primarily closed. Partial-thickness donor sites still contain deep-seated epithelial remnants, from which skin can regrow. A re-epithelialized donor site may be reharvested a number of times, although the quality of the skin diminishes over time.

In extensive burns, the scalp is often used because the site re-epithelializes rapidly and thus can be reharvested quickly and often,¹⁵⁰ although the use of this site in children with dark skin was recently shown to lead to a relatively high number of complications.¹⁵³ The skin quality of a donor site should resemble the skin of the recipient site as much as possible.

Donor sites themselves can cause considerable morbidity, primarily because they are very painful.^{154–158} They may also present healing difficulties,¹⁵² particularly in older adult patients with frail skin and in patients with large burns. In large burns, when no other locations are available, donor sites may also be

surrounded by burned areas and thus become more prone to infection and present difficulty in dressing the wound.

Donor sites bleed profusely. Different hemostatic materials (eg, epinephrine and thrombin dressings) are often used in combination with, or prior to application of, a cover dressing. While superficial donor sites usually heal without serious scarring, some patients do develop hypertrophic scars.

Many different types of dressings are used to treat donor sites.⁹⁰ The same criteria apply for these dressings as those for partial-thickness burns.^{88,89} Choose materials that help provide hemostasis and provide pain reduction and rapid healing to reduce short- and long-term morbidity.

CONCLUSIONS

The treatment of serious burns, donor sites, and related injuries and diseases should happen in a burn center. In these centers, interprofessional teams are dedicated to burn care, and their knowledge of the latest and most effective treatment options often leads to relatively satisfying results. Further, the physical structure of a burn center is specialized and may include advantages such as advanced temperature control to heat up patient rooms during dressing changes and a hierarchic treatment of air pressure using patient room entry locks.^{159,160}

However, the large majority of patients with burns suffer from lesions that do not necessitate this high level of care. These lesions can be successfully treated outside in a general hospital or an outpatient clinic, provided that wound management is conducted in line with evidence-based burn care guidelines and with proper materials and techniques. Guidelines for referral⁸³ should be followed, and if a burn has not healed within 10 to 14 days, the patient should be referred to a specialist.

PRACTICE PEARLS

- Immediate cooling with running tap water for about 10 minutes is the best first aid.
- Superficial burns may become deeper secondarily; therefore, burns that take longer than 2 weeks to heal should be referred to a specialist, because they may very well have to be excised and grafted.
- Full-thickness burns, unless they are very small, should be excised and grafted unless there are specific contraindications.
- Particularly with flame burns, always be aware of the possibility of an inhalation injury and/or carbon monoxide poisoning.
- Short-term acceptable cosmetic outcome (ie, immediately after reepithelialization) does not guarantee patient satisfaction with long-term scars.

REFERENCES

- American Burn Association. Burn Incidence Fact Sheet. 2016. <http://ameriburn.org/who-we-are/media/burn-incidence-fact-sheet>. Last accessed October 16, 2018.
- Rockwell WB, Cohen IK, Ehrlich HP. Keloids and hypertrophic scars: a comprehensive review. *Plast Reconstr Surg* 1989;84(5):827-37.
- Treadwell T, Hermans MHE. An introduction to wounds. In: *Microbiology of Wounds*. 1st ed. Percival S, Cutting K, eds. Boca Raton, FL: CRC Press; 2010.
- DeToledo JC, Lowe MR. Microwave oven injuries in patients with complex partial seizures. *Epilepsy Behav* 2004;5(5):772-4.
- Josty IC, Mason WT, Dickson WA. Burn wound management in patients with epilepsy: adopting a multidisciplinary approach. *J Wound Care* 2002;11(1):31-4.
- Harrington WZ, Stroschein BL, Reedy D, et al. Pavement temperature and burns: streets of fire. *Ann Emerg Med* 1995;26(5):563-8.
- Sances A Jr, Myklebust JB, Larson SJ, et al. Experimental electrical injury studies. *J Trauma* 1981;21(8):589-97.
- Cancio LC, Jimenez-Reyna JF, Barillo DJ, et al. One hundred ninety-five cases of high-voltage electric injury. *J Burn Care Rehabil* 2005;26(4):331-40.
- Arnold BD, Purdue GF, Tchorz K, et al. A case report of phaeohyphomycosis caused by *Cladophiala bantiana* treated in a burn unit. *J Burn Care Rehabil* 2005;26(3):285-7.
- Barillo DJ, McManus AT, Cancio LC, et al. Burn center management of necrotizing fasciitis. *J Burn Care Rehabil* 2003;24(3):127-32.
- Redman DP, Friedman B, Law E, et al. Experience with necrotizing fasciitis at a burn care center. *South Med J* 2003;96(9):868-70.
- Edlich RF, Farinolt HM, Winters KL, et al. Modern concepts of treatment and prevention of chemical injuries. *J Long Term Eff Med Implants* 2005;15(3):303-18.
- Leonard LG, Scheulen JJ, Munster AM. Chemical burns: effect of prompt first aid. *J Trauma* 1982;22(5):420-3.
- Wang X, Zhang Y, Ni L, et al. A review of treatment strategies for hydrofluoric acid burns: current status and future prospects. *Burns* 2014;40(8):1447-57.
- Dunn BJ, MacKinnon MA, Knowlden NF, et al. Hydrofluoric acid dermal burns. An assessment of treatment efficacy using an experimental pig model. *J Occup Med* 1992;34(9):902-9.
- Berger ME, Hurtado R, Dunlap J, et al. Accidental radiation injury to the hand: anatomical and physiological considerations. *Health Phys* 1997;72(3):343-8.
- Lorette G, Machet L. Radiation-induced skin toxicities: prevention, treatment [in French]. *Cancer Radiother* 2001;5 Suppl 1:116S-20S.
- Muller K, Meineke V. Radiation-induced alterations in cytokine production by skin cells. *Exp Hematol* 2007;35(4 Suppl 1):96-104.
- Saarialho-Kere U, Kerkela E, Jeskanen L, et al. Accumulation of matrilysin (MMP-7) and macrophage metalloelastase (MMP-12) in actinic damage. *J Invest Dermatol* 1999;113(4):664-72.
- Beetz A, Messer G, Oppel T, et al. Induction of interleukin 6 by ionizing radiation in a human epithelial cell line: control by corticosteroids. *Int J Radiat Biol* 1997;72(1):33-43.
- Lefaix JL, Daburon F. Diagnosis of acute localized irradiation lesions: review of the French experimental experience. *Health Phys* 1998;75(4):375-84.
- Vozenin-Brotans MC, Gault N, Sivan V, et al. Histopathological and cellular studies of a case of cutaneous radiation syndrome after accidental chronic exposure to a cesium source. *Radiat Res* 1999;152(3):332-7.
- Hernndon DN. *Total Burn Care*. 2nd ed. New York, NY: Saunders; 2002.
- Lund CC, Browder NC. The estimate of area of burns. *Surg Gynecol Obstet* 1944;79:352-8.
- Borhani-Khomani K, Partoft S, Holmgard R. Assessment of burn size in obese adults; a literature review. *J Plast Surg Hand Surg* 2017;51(6):375-80.
- Sheridan RL, Petras L, Basha G, et al. Planimetry study of the percent of body surface represented by the hand and palm: sizing irregular burns is more accurately done with the palm. *J Burn Care Rehabil* 1995;16(6):605-6.
- McCulloch C, Nordin A, Talbot LJ, et al. Accuracy of prehospital care providers in determining total body surface area burned in severe pediatric thermal injury. *J Burn Care Res* 2018;39(4):491-6.
- Benjamin NC, Wurzer P, Voigt CD, et al. Using a 3D tool to document and determine graft loss: a mini-review and case report. *Burns* 2016;42(4):e65-9.
- Cheah AKW, Kangkorn T, Tan EH, et al. The validation study on a three-dimensional burn estimation smart-phone application: accurate, free and fast? *Burns Trauma* 2018;6:7.
- Rashaan ZM, Euser AM, van Zijl PPM, et al. Three-dimensional imaging is a novel and reliable technique to measure total body surface area. *Burns* 2018;44(4):816-22.
- Daigeler A, Kapalschinski N, Lehnhardt M. Therapy of burns [in German]. *Chirurg* 2015;86(4):389-401.
- Aoki K, Yoshino A, Yoh K, et al. A comparison of Ringer's lactate and acetate solutions and resuscitative effects on splanchnic dysoxia in patients with extensive burns. *Burns* 2010;36(7):1080-5.
- Mitra B, Fitzgerald M, Wasiak J, et al. The Alfred pre-hospital fluid formula for major burns. *Burns* 2011;37(7):1134-9.
- Deitch EA, Bridges RM, Dobke M, et al. Burn wound sepsis may be promoted by a failure of local antibacterial host defenses. *Ann Surg* 1987;206(3):340-8.
- Allgower M, Stadler K, Schoenenberger GA. Burn sepsis and burn toxin. *Ann R Coll Surg Engl* 1974;55(5):226-35.
- Devrim I, Kara A, Duzgol M, et al. Burn-associated bloodstream infections in pediatric burn patients: time distribution of etiologic agents. *Burns* 2017;43(1):144-8.
- Issler-Fisher AC, Fakin RM, Fisher OM, et al. Microbiological findings in burn patients treated in a general versus a designated intensive care unit: effect on length of stay. *Burns* 2016;42(8):1805-18.
- Trouve C, Blot S, Hayette MP, et al. Epidemiology and reporting of candidaemia in Belgium: a multi-centre study. *Eur J Clin Microbiol Infect Dis* 2017;36(4):649-55.
- Jeschke MG, Micak RP, Finnerty CC, et al. Burn size determines the inflammatory and hypermetabolic response. *Crit Care* 2007;11(4):R90.
- Rosenthal SR. Burn toxin and its competition. *Burns Incl Therm Inj* 1982;8(3):215-9.
- Chong DL, Sriskandan S. Pro-inflammatory mechanisms in sepsis. *Contrib Microbiol* 2011;17:86-107.
- Enkhbaatar P, Traber DL. Pathophysiology of acute lung injury in combined burn and smoke inhalation injury. *Clin Sci (Lond)* 2004;107(2):137-43.
- Smith DL, Cairns BA, Ramadan F, et al. Effect of inhalation injury, burn size, and age on mortality: a study of 1447 consecutive burn patients. *J Trauma* 1994;37(4):655-9.
- Barrow RE, Spies M, Barrow LN, et al. Influence of demographics and inhalation injury on burn mortality in children. *Burns* 2004;30(1):72-7.
- Jones SW, Williams FN, Cairns BA, et al. Inhalation injury: pathophysiology, diagnosis, and treatment. *Clin Plast Surg* 2017;44(3):505-11.
- Artz C, Moncrief J, Pruitt BA Jr, eds. *The Body's Response to Heat*. New York, NY: Saunders; 1979.
- Singh V, Devgan L, Bhat S, et al. The pathogenesis of burn wound conversion. *Ann Plast Surg* 2007;59(1):109-15.
- Saranto JR, Rubayi S, Zawacki BE. Blisters, cooling, antithromboxanes, and healing in experimental zone-of-stasis burns. *J Trauma* 1983;23(10):927-33.
- Zawacki BE. The natural history of reversible burn injury. *Surg Gynecol Obstet* 1974;139(6):867-72.
- Zawacki BE. Reversal of capillary stasis and prevention of necrosis in burns. *Ann Surg* 1974;180(1):98-102.
- Kaufman T, Neuman RA, Weinberg A. Is postburn dermal ischaemia enhanced by oxygen free radicals? *Burns* 1989;15(5):291-4.
- Schmauss D, Rezaeian F, Finck T, et al. Treatment of secondary burn wound progression in contact burns—a systematic review of experimental approaches. *J Burn Care Res* 2015;36(3):e176-89.
- Hermans MHE. Treatment of burns with occlusive dressings: some pathophysiological and quality of life aspects. *Burns* 1992;18(Suppl 2):S15-8.
- Goverman J, Bittner EA, Friedstad JS, et al. Discrepancy in initial pediatric burn estimates and its impact on fluid resuscitation. *J Burn Care Res* 2015;36(5):574-9.
- Wachtel TL, Leopold GR, Frank HA, et al. B-mode ultrasonic echo determination of depth of thermal injury. *Burns Incl Therm Inj* 1986;12(6):432-7.
- Black KS, Hewitt CW, Miller DM, et al. Burn depth evaluation with fluorimetry: is it really definitive? *J Burn Care Rehabil* 1986;7(4):313-7.
- Park DH, Hwang JW, Jang KS, et al. Use of laser Doppler flowmetry for estimation of the depth of burns. *Plast Reconstr Surg* 1998;101(6):1516-23.
- Holland AJ, Martin HC, Cass DT. Laser Doppler imaging prediction of burn wound outcome in children. *Burns* 2002;28(1):11-7.
- Hemington-Gorse SJ. A comparison of laser Doppler imaging with other measurement techniques to assess burn depth. *J Wound Care* 2005;14(4):151-3.
- Mileski WJ, Atiles L, Purdue G, et al. Serial measurements increase the accuracy of laser Doppler assessment of burn wounds. *J Burn Care Rehabil* 2003;24(4):187-91.
- Riordan CL, McDonough M, Davidson JM, et al. Noncontact laser Doppler imaging in burn depth analysis of the extremities. *J Burn Care Rehabil* 2003;24(4):177-86.

62. Mirdell R, Farnebo S, Sjöberg F, et al. Accuracy of laser speckle contrast imaging in the assessment of pediatric scald wounds. *Burns* 2018;44(1):90-8.
63. Moritz AR, Henriques FC. Studies of thermal injury: II. The relative importance of time and surface area in the causation of cutaneous burns. *Am J Pathol* 1947;23:695-720.
64. King TC, Zimmerman JM. First-aid cooling of the fresh burn. *Surg Gynecol Obstet* 1965; 120:1271-3.
65. King TC, Zimmerman JM. Optimum temperatures for postburn cooling. *Arch Surg* 1965; 91(4):656-7.
66. King TC, Zimmerman JM, Price PB. Effect of immediate short-term cooling on extensive burns. *Surg Forum* 1962;13:487-8.
67. Demling RH, Mazess RB, Wolberg W. The effect of immediate and delayed cold immersion on burn edema formation and resorption. *J Trauma* 1979;19(1):56-60.
68. Demling RH. Burns. *N Engl J Med* 1985;313(22):1389-98.
69. Stratta RJ, Saffle JR, Kravitz M, et al. Management of tar and asphalt injuries. *Am J Surg* 1983;146(6):766-9.
70. Hermans MHE, Vloemans AFPM. A patient with a subungual burn caused by hydrofluoric acid [in Dutch]. *Ned Tijdschr Geneesk* 1985;129(52):2510-1.
71. Eldad A, Chaouat M, Weinberg A, et al. Phosphorous pentachloride chemical burn—a slowly healing injury. *Burns* 1992;18(4):340-1.
72. Eldad A, Simon GA. The phosphorous burn—a preliminary comparative experimental study of various forms of treatment. *Burns* 1991;17(3):198-200.
73. Iverson RE, Laub DR. Hydrofluoric acid burn therapy. *Surg Forum* 1970;21:517-9.
74. Murao M. Studies on the treatment of hydrofluoric acid burn. *Bull Osaka Med Coll* 1989; 35(1-2):39-48.
75. Mangion SM, Beulke SH, Braitberg G. Hydrofluoric acid burn from a household rust remover. *Med J Aust* 2001;175(5):270-1.
76. Monato WW, Ayvazian VH. Topical therapy. *Surg Clin North Am* 1978;58(6):1157-71.
77. American Burn Association. Advanced Life Support Providers Manual. Chicago, IL: American Burn Association; 1994.
78. Heimbach DM, Waeckerle JF. Inhalation injuries. *Ann Emerg Med* 1988;17(12):1316-20.
79. Otterness K, Ahn C. Emergency department management of smoke inhalation injury in adults. *Emerg Med Pract* 2018;20(3):1-24.
80. Pegg SP. Escharotomy in burns. *Ann Acad Med Singapore* 1992;21(5):682-4.
81. Tsoutsos D, Rodopoulou S, Keramidas E, et al. Early escharotomy as a measure to reduce intraabdominal hypertension in full-thickness burns of the thoracic and abdominal area. *World J Surg* 2003;27(12):1323-8.
82. Wong L, Spence RJ. Escharotomy and fasciotomy of the burned upper extremity. *Hand Clin* 2000;16(2):165-74, vii.
83. American Burn Association. Burn Center Referral Criteria. 2017. <http://ameriburn.org/wp-content/uploads/2017/05/burncenterreferralcriteria.pdf>. Last accessed October 16, 2018.
84. Oto B, Orsco RI, Panter E, et al. Prone positioning of the burn patient with acute respiratory distress syndrome: a review of the evidence and practical considerations. *J Burn Care Res* 2018;39(3):471-5.
85. Nederlandse Brandwonden Stichting. Wat zijn brandwonden? 2018. <https://brandwondenstichting.nl/brandwonden>. Last accessed October 16, 2018.
86. Herndon DN, Gore D, Cole M, et al. Determinants of mortality in pediatric patients with greater than 70% full-thickness total body surface area thermal injury treated by early total excision and grafting. *J Trauma* 1987;27(2):208-12.
87. Herndon DN, LeMaster J, Beard S, et al. The quality of life after major thermal injury in children: an analysis of 12 survivors with greater than or equal to 80% total body, 70% third-degree burns. *J Trauma* 1986;26(7):609-19.
88. Broussard KC, Powers JG. Wound dressings: selecting the most appropriate type. *Am J Clin Dermatol* 2013;14(6):449-59.
89. Selig HF, Lumenta DB, Giretzlehner M, et al. The properties of an “ideal” burn wound dressing—what do we need in daily clinical practice? Results of a worldwide online survey among burn care specialists. *Burns* 2012;38(7):960-6.
90. Hermans MH. Results of an internet survey on the treatment of partial thickness burns, full thickness burns, and donor sites. *J Burn Care Res* 2007;28(6):835-47.
91. Hermans MHE. Results of a survey on the use of different treatment options for partial and full thickness burns. *Burns* 1998;24(6):539-51.
92. Fox CL Jr. Silver sulfadiazine for control of burn wound infections. *Int Surg* 1975;60(5):275-7.
93. Fraser GL, Beaulieu JT. Leukopenia secondary to sulfadiazine silver. *JAMA* 1979;241(18): 1928-9.
94. Wasiak J, Cleland H, Campbell F, et al. Dressings for superficial and partial thickness burns. *Cochrane Database Syst Rev* 2013(3):CD002106.
95. Ang E, Lee ST, Gan CS, et al. Pain control in a randomized, controlled, clinical trial comparing moist exposed burn ointment and conventional methods in patients with partial-thickness burns. *J Burn Care Rehabil* 2003;24(5):289-96.
96. Ang ES, Lee ST, Gan CS, et al. The role of alternative therapy in the management of partial thickness burns of the face—experience with the use of moist exposed burn ointment (MEBO) compared with silver sulphadiazine. *Ann Acad Med Singapore* 2000; 29(1):7-10.
97. Chatterjee DS. A controlled comparative study of the use of porcine xenograft in the treatment of partial thickness skin loss in an occupational health centre. *Curr Med Res Opin* 1978;5(9):726-33.
98. Hermans MHE, Hutchinson JJ. Advantages of Occlusive Dressings. London: Springer Verlag; 1990.
99. Platt AJ, Phipps A, Judkins K. A comparative study of silicone net dressing and paraffin gauze dressing in skin-grafted sites. *Burns* 1996;22(7):543-5.
100. Vloemans AF, Hermans MH, van der Wal MB, et al. Optimal treatment of partial thickness burns in children: a systematic review. *Burns* 2014;40(2):177-90.
101. Wasiak J, Cleland H. Burns: dressings. *BMJ Clin Evid* 2015;2015.
102. Wyatt D, McGowan DN, Najarian MP. Comparison of a hydrocolloid dressing and silver sulfadiazine cream in the outpatient management of second-degree burns. *J Trauma* 1990;30(7):857-65.
103. Alsjoern BF. Towards early excision and extended grafting of excessive burns. *Dan Med Bull* 1991;38(4):328-37.
104. Hermans RP. De techniek van de behandeling van brandwonden. Leiden: Staphleu's wetenschappelijke uitgeverijmaatschappij; 1968.
105. MacMillan B. Early excision. *J Trauma* 1967;7:75-81.
106. Chua AWC, Khoo YC, Truong TTH, et al. From skin allograft coverage to allograft-micrograft sandwich method: a retrospective review of severe burn patients who received conjunctive application of cultured epithelial autografts. *Burns* 2018;44(5):1302-7.
107. Kreis RW, Mackie DP, Hermans RR, et al. Expansion techniques for skin grafts: comparison between mesh and Meek island (sandwich-) grafts. *Burns* 1994;20 Suppl 1:S39-42.
108. Kreis RW, Mackie DP, Vloemans AW, et al. Widely expanded postage stamp skin grafts using a modified Meek technique in combination with an allograft overlay. *Burns* 1993;19(2): 142-5.
109. Kreis RW, Vloemans AF, Hoekstra MJ, et al. The use of non-viable glycerol-preserved cadaver skin combined with widely expanded autografts in the treatment of extensive third-degree burns. *J Trauma* 1989;29(1):51-4.
110. Castagnoli C, Stella M, Berthod C, et al. TNF production and hypertrophic scarring. *Cell Immunol* 1993;147(1):51-63.
111. Niessen FB, Andriessen MP, Schalkwijk J, et al. Keratinocyte-derived growth factors play a role in the formation of hypertrophic scars. *J Pathol* 2001;194(2):207-16.
112. Ogawa R. Keloid and hypertrophic scars are the result of chronic inflammation in the reticular dermis. *Int J Mol Sci* 2017;18(3).
113. Zurada JM, Kriegel D, Davis IC. Topical treatments for hypertrophic scars. *J Am Acad Dermatol* 2006;55(6):1024-31.
114. Bock O, Schmid-Ott G, Malewski P, et al. Quality of life of patients with keloid and hypertrophic scarring. *Arch Dermatol Res* 2006;297(10):433-8.
115. Deitch EA, Wheelahan TM, Rose MP, et al. Hypertrophic burn scars: analysis of variables. *J Trauma* 1983;23(10):895-8.
116. Worley CA. The wound healing process: part III—the finale. *Dermatol Nurs* 2004;16(3): 274, 95.
117. Lista FR, Thomson HG. The fate of sternotomy scars in children. *Plast Reconstr Surg* 1988;81(1):35-9.
118. Roques C. Pressure therapy to treat burn scars. *Wound Repair Regen* 2002;10(2):122-5.
119. Rochet JM, Zaoui A. Burn scars: rehabilitation and skin care [in French]. *Rev Prat* 2002; 52(20):2258-63.
120. Puzey G. The use of pressure garments on hypertrophic scars. *J Tissue Viability* 2002; 12(1):11-5.
121. Jordan RB, Daher J, Wasil K. Splints and scar management for acute and reconstructive burn care. *Clin Plast Surg* 2000;27(1):71-85.
122. Ayhan M, Gorgu M, Silistreli KO, et al. Silastic sheet integrated polymethylmetacrylate splint in addition to surgery for commissure contractures complicated with hypertrophic scar. *Acta Chir Plast* 2004;46(4):132-5.
123. Van den Kerckhove E, Boeckx W, Kochuyt A. Silicone patches as a supplement for pressure therapy to control hypertrophic scarring. *J Burn Care Rehabil* 1991;12(4):361-9.
124. Kavanagh GM, Page P, Hanna MM. Silicone gel treatment of extensive hypertrophic scarring following toxic epidermal necrolysis. *Br J Dermatol* 1994;130(4):540-1.

125. Haedersdal M, Poulsen T, Wulf HC. Laser induced wounds and scarring modified by antiinflammatory drugs: a murine model. *Lasers Surg Med* 1993;13(1):55-61.
126. Beldon P. Management of scarring. *J Wound Care* 1999;8(10):509-12.
127. Lupton JR, Alster TS. Laser scar revision. *Dermatol Clin* 2002;20(1):55-65.
128. Liew SH, Murison M, Dickson WA. Prophylactic treatment of deep dermal burn scar to prevent hypertrophic scarring using the pulsed dye laser: a preliminary study. *Ann Plast Surg* 2002;49(5):472-5.
129. Xiang J, Wang XQ, Qing C, et al. The influence of dermal template on the expressions of signal transduction protein Smad 3 and transforming growth factor beta1 and its receptor during wound healing process in patients with deep burns [in Chinese]. *Zhonghua Shao Shang Za Zhi* 2005;21(1):52-4.
130. Madni TD, Nakonezny PA, Imran JB, et al. Patient satisfaction after fractional ablation of burn scar with 2940nm wavelength erbium-YAG laser. *Burns* 2018;44(5):1100-05.
131. Suliman MT. Experience with the seven flap-plasty for the release of burns contractures. *Burns* 2004;30(4):374-9.
132. Deb R, Giesler GA, Przybiski M, et al. Secondary plastic surgical reconstruction in severely burned patients [in German]. *Chirurg* 2004;75(6):588-98.
133. Lu KH, Guo SZ, Ai YF, et al. Management of severe postburn scar contracture in the lower extremities [in Chinese]. *Zhonghua Shao Shang Za Zhi* 2004;20(2):69-71.
134. Selezneva LG. Keloid scars after burns. *Acta Chir Plast* 1976;18(2):106-11.
135. Iudenich VV, Pal'tsyn AA, Zalugovskii OG. Electron microscopic and autoradiographic study of keloid scars [in Russian]. *Arkh Patol* 1982;44(1):44-9.
136. Bang RL, Dashti H. Keloid and hypertrophic scars: trace element alteration. *Nutrition* 1995;11(5 Suppl):527-31.
137. Morison WL. Oral treatment of keloid. *Med J Aust* 1968;1(10):412-3.
138. Donati L, Taidelli Palmizi GA. Treatment of hypertrophic and keloid cicatrices with thiomucase [in Italian]. *Minerva Chir* 1975;30(6):326-33.
139. Tammelleo AD. Suit for post-operative scar: keloid or burn? *Regan Rep Nurs Law* 1996;37(4):4.
140. Ahlering PA. Topical silastic gel sheeting for treating and controlling hypertrophic and keloid scars: case study. *Dermatol Nurs* 1995;7(5):295-7, 322.
141. Sizov VM. The diagnosis and treatment of hypertrophic and keloid scars [in Russian]. *Klin Khir* 1994(9):41-3.
142. El-Otiefy MA, Darwish AM. Post-burn breast deformity: various corrective techniques. *Ann Burns Fire Disasters* 2011;24(1):42-5.
143. Mody NB, Bankar SS, Patil A. Post burn contracture neck: clinical profile and management. *J Clin Diagn Res* 2014;8(10):NC12-7.
144. Sabapathy SR, Bajantri B, Bharathi RR. Management of post burn hand deformities. *Indian J Plast Surg* 2010;43(Suppl):S72-9.
145. Iqbal FM, Sinha Y, Jaffe W. Marjolin's ulcer: a rare entity with a call for early diagnosis. *BMJ Case Rep* 2015;2015.
146. Karasoy Yesilada A, Zeynep Sevim K, Ozgur Sucu D, et al. Marjolin ulcer: clinical experience with 34 patients over 15 years. *J Cutan Med Surg* 2013;17(6):404-9.
147. Oruc M, Kankaya Y, Sungur N, et al. Clinicopathological evaluation of Marjolin ulcers over two decades. *Kaohsiung J Med Sci* 2017;33(7):327-33.
148. Phillips TJ, Salman SM, Bhawan J, et al. Burn scar carcinoma. Diagnosis and management. *Dermatol Surg* 1998;24(5):561-5.
149. Siemers F, Lohmeyer JA, Machens HG, et al. Heterotopic ossifications: a severe complication following extensive burn injury [in German]. *Handchir Mikrochir Plast Chir* 2007;39(5):360-3.
150. Barret JP, Dziewulski P, Wolf SE, et al. Outcome of scalp donor sites in 450 consecutive pediatric burn patients. *Plast Reconstr Surg* 1999;103(4):1139-42.
151. Desai MH, Herndon DN, Rutan RL, et al. An unusual donor site, a lifesaver in extensive burns. *J Burn Care Rehabil* 1988;9(6):637-9.
152. Smith DJ Jr, Thomson PD, Garner WL, et al. Donor site repair. *Am J Surg* 1994;167(1A):49S-51S.
153. van Niekerk G, Adams S, Rode H. Scalp as a donor site in children: is it really the best option? *Burns* 2018;44(5):1259-68.
154. Madden MR, Nolan E, Finkelstein JL, et al. Comparison of an occlusive and a semi-occlusive dressing and the effect of the wound exudate upon keratinocyte proliferation. *J Trauma* 1989;29(7):924-30; discussion 30-1.
155. Zapata-Sirvent R, Hansbrough JF, Carroll W, et al. Comparison of Biobrane and Scarlet Red dressings for treatment of donor site wounds. *Arch Surg* 1985;120(6):743-5.
156. Innes ME, Umraw N, Fish JS, et al. The use of silver coated dressings on donor site wounds: a prospective, controlled matched pair study. *Burns* 2001;27(6):621-7.
157. Hansbrough W. Nursing care of donor site wounds. *J Burn Care Rehabil* 1995;16(3 Pt 1):337-9; discussion 39-40.
158. Hyland WT. A painless donor-site dressing. *Plast Reconstr Surg* 1982;69(4):703-4.
159. Jennings RG. Design of a burn treatment unit. *J Clin Eng* 1981;6(2):133-6.
160. Wachtel TL, Hartford CE, Hughes JA. Building a balanced scorecard for a burn center. *Burns* 1999;25(5):431-7.

For more than 142 additional continuing education articles related to Skin and Wound Care topics, go to NursingCenter.com/CE.

CE CONNECTION

CONTINUING MEDICAL EDUCATION INFORMATION FOR PHYSICIANS

Lippincott Continuing Medical Education Institute, Inc., is accredited by the Accreditation Council for Continuing Medical Education to provide continuing medical education for physicians.

Lippincott Continuing Medical Education Institute, Inc., designates this journal-based CME activity for a maximum of 1 *AMA PRA Category 1 Credit™*. Physicians should claim only the credit commensurate with the extent of their participation in the activity.

PROVIDER ACCREDITATION INFORMATION FOR NURSES

Lippincott Professional Development will award 1.5 contact hours for this continuing nursing education activity.

LPD is accredited as a provider of continuing nursing education by the American Nurses Credentialing Center's Commission on Accreditation.

This activity is also provider approved by the California Board of Registered Nursing, Provider Number CEP 11749 for 1.5 contact hours. LWW is also an approved provider by the District of Columbia, Georgia, and Florida CE Broker #50-1223.

OTHER HEALTH PROFESSIONALS

This activity provides ANCC credit for nurses and *AMA PRA Category 1 Credit™* for MDs and

DOs only. All other healthcare professionals participating in this activity will receive a certificate of participation that may be useful to your individual profession's CE requirements.

CONTINUING EDUCATION INSTRUCTIONS

- Read the article beginning on page 9. For nurses who wish to take the test for CNE contact hours, visit <http://nursing.ceconnection.com>. For physicians who wish to take the test for CME credit, visit <http://cme.lww.com>. Under the Journal option, select *Advances in Skin and Wound Care* and click on the title of the CE activity.
- You will need to register your personal CE Planner account before taking online tests. Your planner will keep track of all your Lippincott Professional Development online CE activities for you.
- There is only one correct answer for each question. A passing score for this test is 13 correct answers. If you pass, you can print your certificate of earned contact hours or credit and access the answer key. Nurses who fail have the option of taking the test again at no additional cost. Only the first entry sent by physicians will be accepted for credit.

Registration Deadline: December 31, 2020 (physicians); December 4, 2020 (nurses).

PAYMENT

- The registration fee for this CE activity is \$17.95 for nurses; \$22.00 for physicians.